



LED Information Display

GXO

GXO series information displays are digital LED information displays specially designed to create a large display area in the transport hub and train transport. The full-matrix LED displays provide a flexible solution for passenger information systems providing up-to-date information to passengers. Designed without front cover glass for optimal contrast and color reproduction. Various mounting options.



Features

LED Technology

LED full-matrix technology allows freely configurable display layout. Full graphical display with fine pixel pitch 2.5 mm perfectly displays text, graphic symbols, images, videos, websites and live broadcasts.

- High brightness display guarantees excellent readability even in direct sunlight.
- Display of public transport information, train and bus departures, general passenger information as well as advertising messages and other multimedia.

Information System

Possibility of making the display as an autonomous display element or as part of larger information system.

- Management by an external master computer makes tracking and controlling easier.
- Power and runtime data are automatically monitored.

Mechanical Design

- Stable construction made of aluminium profiles.
- Without front glass for excellent contrast and color reproduction, complete reduction of reflections, better cooling of modules and lower weight.
- Flexible dimensions in multiples of 0.5 m.
- Ceiling, wall bracket or wall surface mounting. Customized solution on request.
- Single sided or double sided design.
- Possibility to implement extra digital or analogue clock.
- Passive cooling without fans.
- Easy access to all internal modules after dismantling the LED modules.

Operation

- The display is designed for reliable usage 24/7 in indoor and outdoor conditions.
- Choose from two types of modes according to displays usage.

Text-to-Speech Module

Specially developed module for visually handicapped person.

- The module provides the necessary information via synthetic voice output from 15W speakers.

Various Areas of Use



Train Stops



Train Stations



Metro

Pravidelný Time		Očekávaný Estimated	Vlak Train	Linka Line	Cíl Destination	přes via	Kolej Platform
10:26	10:41	Os	4650 ČD	S3	Tišnov	Brno-Židenice	4-8
10:35		Os	4025 ČD	S2	Křenovice hor.n.	Sokolnice-Teln.	4-8
10:39		Os	4645 ČD	S3	Hustopeče u Brna	Brno-H.Hieršpice	2-1
10:52		R	909 ČD	R12	Šumperk	Nezamyslice	3-6
11:02		rj	90257 ČD	Ex3	Graz Hbf	Wien Hbf	1-3
11:38	11:48	EC	278 ČD	Ex3	Praha hl.n.	Brno-Kr.Pole	2-2A-B
11:48		Sp	1767 ČD	R56	St.Město u Uh.H.	Kyjov	
11:56		R	823 ČD	R13	Hodonín	Podivín	
12:00	11:48	Os	4647 ČD	S3	Židlochovice	Modřice	

Běžící text - aktuální informace



SMD LED Technology



Full Color RGB Display



Usage 24/7



Brightness up to 5 500 cd/m²



Management and Monitoring System



Maintenance-free Passive Cooling



Option WiFi, LTE or Fiber Optics



Text-To-Speech Module



Suitable for Outdoor Use

Technical Parameters

GXO.		25
Module Specifications	pixel pitch [mm]	2.5
	resolution [px]	100 × 100
	size [mm]	250 × 250
	brightness	4 500 cd/m ²
	viewing angle	±70° × ±60°
	frame frequency	50 Hz
	refresh rate	1 920 Hz
	color depth	24 bit
	contrast	3 000:1
	life span	≥ 100 000 hours (70% brightness)
Mechanical Construction	frame	aluminium profiles
	service access	from front after dismantling the LED modules, LED modules held by magnets
	cooling	passive cooling
	dimensions	according to active display area
	protection degree	IP 54
	max. size of active display area [m] W × H	without size limit, multiples of 0.5 × 0.5 m
	Temperature Management	temperature
humidity		10 to 90 % (without condensing)
max. intensity of solar radiation		1 120 W/m ²
Power	power voltage	100–240 VAC, 50–60 Hz
	max. power consumption	45 W/ module MAX, 15 W/ module AVG
Mounting	standard	ceiling suspension, wall bracket, wall surface mounting
	on request	customized solution

Basic Font Set

GXO.25

Font Name	Standard 5/7	Bold 6/7	Narrow 4/7	Standard 6/10	Narrow 6/12	Arial 9/11	Arial 11/13	Arial 15/17	Arial 17/19	Arial 25/27
Max. character size (including gaps) [px] A × B	6 × 10	7 × 10	5 × 10	7 × 14	7 × 10	8 × 14	12 × 18	16 × 27	18 × 30	26 × 42
Height of capital letter [mm] C	18.8	18.8	18.8	26.3	31.3	28.8	33.8	43.8	48.8	68.8
Readability DIN1450 [m]	8	8	8	12	13	12	14	18	20	28
Readability TSI-PRM [m]	5	5	5	7	8	7	8	11	12	17
Number of characters per line (1 module)	16.7	14.3	20.0	14.3	14.3	12.5	8.3	6.3	5.6	3.8
Max. number of rows per module	10.0	10.0	10.0	7.1	10.0	7.1	5.6	3.7	3.3	2.4

Possibility to add font on customer's request.



Indicative Dimensions Table

GXO.25

No. of Modules Horizontally / Pixels

2 200	4 400	6 600	8 800	10 1000	12 1200	14 1400	16 1600	18 1800
----------	----------	----------	----------	------------	------------	------------	------------	------------

No. of Character per Line (Font Standard 5/7)

No. of Modules Vertically / Pixels

2 200
4 400
6 600
8 800

No. of Rows (Font Standard 5/7)

		33.3	66.7	100	133.3	166.7	200	233.3	266.7	300
No. of Rows (Font Standard 5/7)	20.0	500 500	1000 500	1500 500	2000 500	2500 500	3000 500	3500 500	4500 500	5000 500
	40.0	500 1000	1000 1000	1500 1000	2000 1000	2500 1000	3000 1000	3500 1000	4500 1000	5000 1000
	60.0	500 1500	1000 1500	1500 1500	2000 1500	2500 1500	3000 1500	3500 1500	4500 1500	5000 1500
	80.0	500 2000	1000 2000	1500 2000	2000 2000	2500 2000	3000 2000	3500 2000	4500 2000	5000 2000

Order Reference

1 Model
 GXO.25 25

2 Number of Pixels Horizontally
 GXO.25 (100 px per module) 200-1800¹

3 Number of Pixels Vertically
 GXO.25 (100 px per module) 200-800¹

4 Display Color
 Full Color RGB Display RGB

5 Design
 Single sided N
 Double sided D

6 Mounting
 Ceiling suspensions S
 Wall surface mounting N
 Wall bracket B
 Wall bracket with additional fastening of left side BL

6 Mounting
 Wall bracket with additional fastening of right side BR
 Customized solution on request Z

7 Cover Glass
 Without font glass O

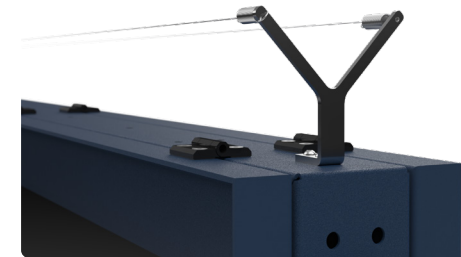
8 Options
 (if more than one options is selected, include the extension code in order indicated separated by dot)

Fixed description (number indicates specific design)	Px
Digital clock	CLK
Analogue clock	ACLK
Analogue clock with seconds hand	ACLKS
Text-To-Speech module with 15W speaker and receiver for visually handicapped	TTS
Interface Ethernet	LAN
Interface RS 485	RS485
Interface WiFi	WiFi
Interface LTE	LTE
Interface fiber optics	FO

9 Frame Color

Matte black	RAL9005
Anthracite	RAL7016
Blue	RAL5003
Frame color on request	RALxxxx

Accessories
 Protection against birds GXO.BP



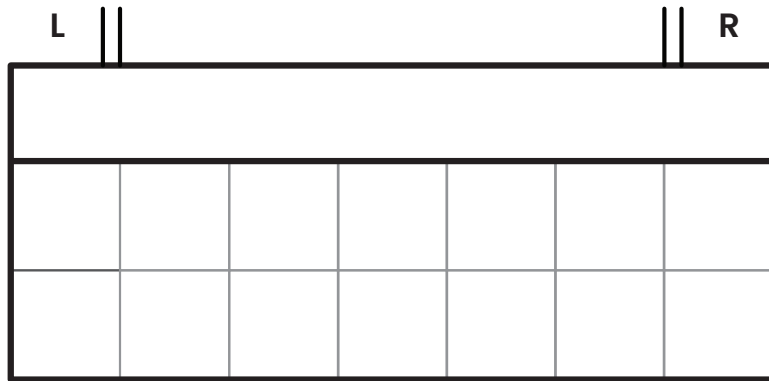
Order example:

GXO.25.1400.600.RGB.N.N.O.CLK.TTS.LAN.RAL7016



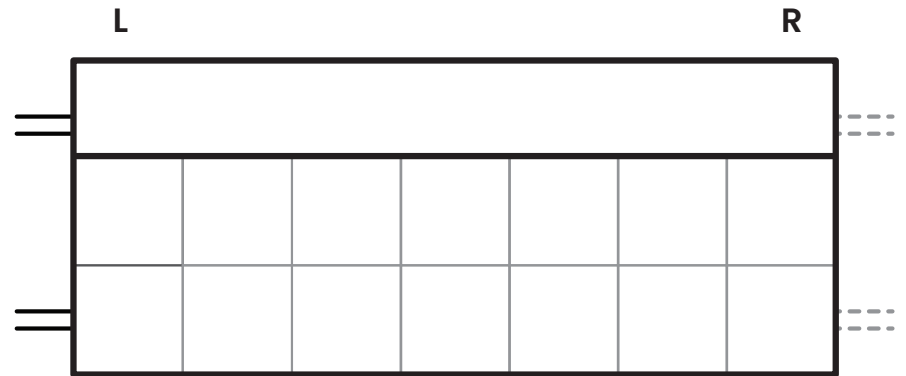
Mounting

Ceiling Suspension



Order reference: **S**

Wall Bracket (with Additional Fastening on Side of the Display)



Order reference for Single Sided: **BL / BR**

Order reference for Double Sided: **B**

Get in Touch



ELEKON, s.r.o.

Brněnská 364/17, Vyškov, 682 01



Tel.: +420 517 302 000



Email: elekon@mobatime.cz



www.mobatime.cz

LE-801391.00-GXO Outdoor LED Full Matrix Information Display-240919_PRELIMINARY

Your Partner Across Time...

We are a traditional Czech company operating in the field of timekeeping and display technology. Our success is evidenced by our continuous growth, both in terms of company size and expansion of our product range or export abroad.

Since 1995 we have been a member of the international holding MOSER-BAER AG and our products under the prestigious MOBATIME brand are exported all over the world.

